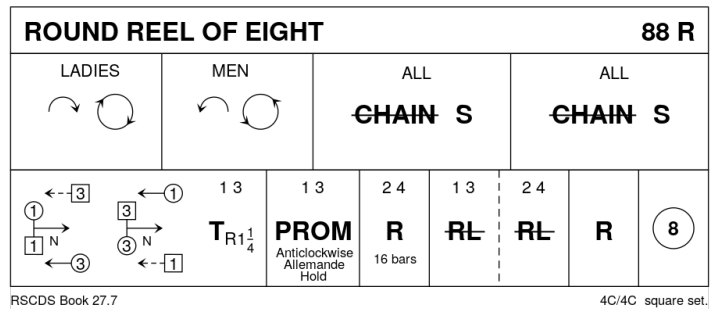


# White Rose Afternoon Massed 2022

## 1 ROUND REEL OF EIGHT R88 · 4S

RSCDS XXVII 7 · Crib: E-cribs · Diagram: Keith Rose's Diagrams

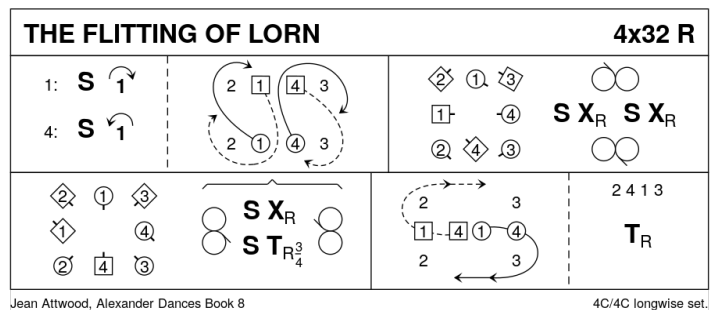
- 1- All W cast by the R and round the set to places
- 9- All M cast by the L and round the set to places
- 17- G-Chain halfway round {6} | all set to P
- 25- Continue G-Chain to places {6} | all set to P
- 33- 1c & 3c change places, 1c passing inside {3}, repeat back to places, 3c passing inside {3} | 1c+3c turn RH 1¼ into Allemande hold
- 41- 1c+3c (passing Lsh) Promenade cclw round inside of set to places
- 49-64 2c+4c repeat [33-48] (2c pass inside first)
- 65- 1c+3c half R&L ; 2c+4c half R&L
- 73- Repeat [65-72] (to 1,2,3,4)
- 81- All Circle8 and back



## 2 THE FLITTING OF LORN R32 · 4/4L

Jean Attwood: Alexander Dances Book 8 · Crib: E-cribs · Diagram: Keith Rose's Diagrams

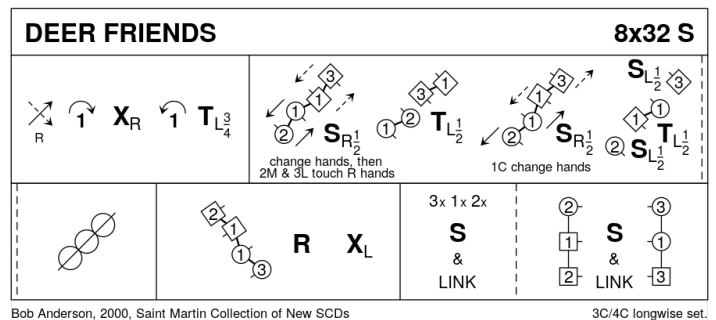
- 1- 1c & 4c set | cast inwards (2c+3c out) ; 1M & 4W ½ Fig8 out the ends **while{4}** 1W & 4M cross | cast R to lines across in 1pl/4pl
- 9- 4W & 1M LSh Reels3 on opp sides with 2c+3c **while{8}** 1W+4M set | change pl RH ; repeat to face 2W/3M
- 17- 2c+1W & 3c+4M RSh Reels3 across **while{8}** 1M+4W set | cross RH ; set | turn ¾ RH to end in tandem behind 4M/1W
- 25- 1W+4W (also 4M+1M) ½ Fig8 out the ends to (2,4,1,3) ; all turn P RH



## 3 "DEER" FRIENDS S32 · 3/4L

Bob Anderson: The Saint Martin Coll. of New Scottish Country Dances Vol 1 · Crib: E-cribs · Diagram: Keith Rose's Diagrams

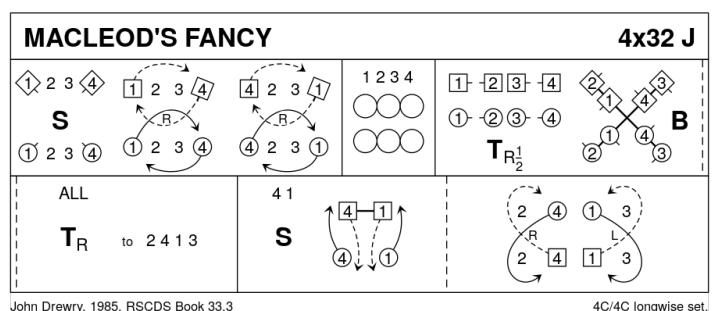
- 1- 1c cross down RH (2c up), cast behind 3c, cross RH and cast up | turn P LH and join RH with 3cnr into diagonal line
- 9- 1c+3cns set R (change hands with cnr) {1}, 1c+3cns turn LH ½, 1c joining RH in middle {1} | 3cns set along the diagonal **while{2}** 1c set R {1} and turn LH ½ to face 3cnr {1} ; ½ Reel4 on 1diag, finish on 2diag, 1c LHJ to P and RHJ to 4cnr
- 17- Repeat [9-16] with 4cns, 1c at the end crossing LH to (3x,1x,2x)
- 25- All S&Link3 twice (2,1,3)



## 4 MACLEOD'S FANCY J32 · 4/4L

John Drewry: RSCDS XXXIII 3 · Crib: E-cribs · Diagram: Keith Rose's Diagrams

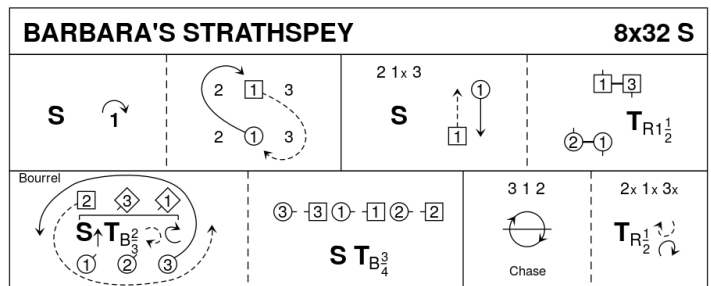
- 1- 1c+4c set facing diagonally | 1W+4M cast R round own sideline and meet with ¾ RH turn in the middle, to places **while{6}** 1M+4W make that turn and cast R round own sideline to places
- 9- All dance Reels4 on the sides to finish (1,2,3,4) facing up/dn
- 17- Middles (2c+3c) turn ends RH ½ way to form a St Andrew's Cross (1c+4c retain RH and give LHA in the middle) | all set ; continue turns once round RH, at the end 1c+4c pass Rsh on own side to end (2,4,1,3) (1M+4W with polite turn)
- 25- (Middle couples solo:) 4c+1c set, Women cross NHJ and face ends **while{2}** Men cross over outside them and turn inwards to join P ; 4c(1c) lead up RH (lead down LH) between 2c(3c), cross and cast to 2pl(3pl) (2,4,1,3)



**5 BARBARA'S STRATHSPEY S32 · 3/4L**

Sue McKinnell: RSCDS XLVI 4 · Crib: E-cribs · Diagram: Keith Rose's Diagrams

- 1- 1c set | cast (2c up) ; ½ Fig8 L (2,1x,3)
- 9- All set | 1c cross Rsh ; 1c+3cnr turn RH 1½ (to 1,2,3 on M side, 2,3,1 on W side)
- 17- 3C Bourrel: 2W+3M chase cclw half round to midline while(4) 1M+3W & 2M+1W set adv | turn BH ¾ and pivot R, all facing P on midline (3,1,2) ; All set | All C turn BH ¾ to sidelines
- 25- All chase clw ½ round ; all turn P RH ½ and twirl R to (2,1,3)



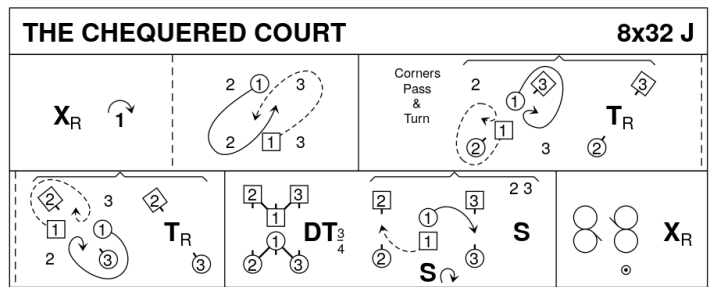
Sue McKinnell, 2006, suedan.com, RSCDS Book 46.4

3C/4C longwise set.

**6 THE CHEQUERED COURT J32 · 3/4L**

Duncan Brown: RSCDS XLII 3 · Crib: E-cribs · Diagram: Keith Rose's Diagrams

- 1- 1c cross RH | cast off (2c up) ; ½ Fig8 across to the R (1M up, 1W down) to face 1cnr
- 9- 1c+1cnrs pass and turn, at end 1c swivels R to be BtoB facing 4cnr ; 1c+4cnrs pass and turn, 1c swivels R to finish BtoB facing own side for
- 17- DTr, 1c finish between end couple facing own side
- 25- Reels3(6) across (Rsh to 4cnr) | 1c cross RH (2,1,3)



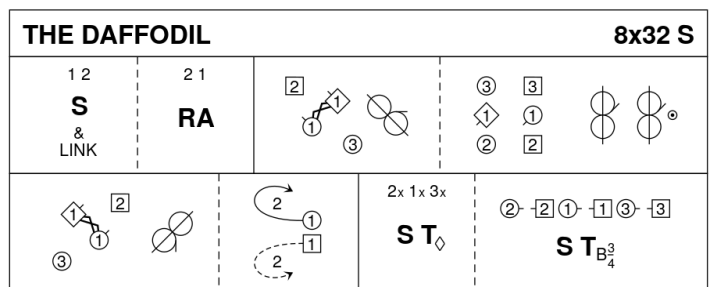
Duncan Brown, 2001, RSCDS Book 42.3

3C/4C longwise set.

**7 THE DAFFODIL S32 · 3/4L**

John Drewry: 20 New Dances by John Drewry 1999-2000 · Crib: MiniCribs · Diagram: Keith Rose's Diagrams

- 1-8 1s+2s Set+Link, 2s+1s dance RH across 1s ending in prom hold facing 2L (Mans 2nd corner)
- 9-16 1s in prom hold dance 1/2 diagonal reel of 3 with corners, 1s split & dance 1/2 reels of 3 across (Lady with 2M+3M (in 1st places) giving LSh to 2M & Man with 3L+2L giving LSh to 2L) to end in prom hold facing 2L (Mans 1st corner pstn)
- 17-24 1s in prom hold dance 1/2 RSh diagonal reel of with corners, 1s dance up to top & cast to 2nd place opp sides
- 25-32 2s+1s+3s set, petronella turn into centre, set & turn partners 2H to own sides



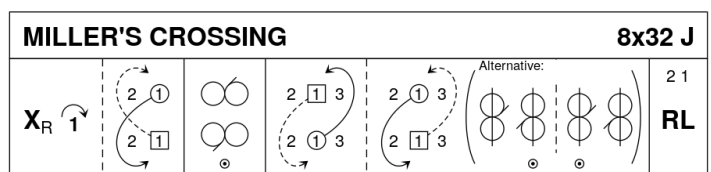
John Drewry, 2000, Greenburn Book 3

3C/4C longwise set.

**8 MILLER'S CROSSING J32 · 3/4L**

Bob McMurtry: The Devil's Quandary · Crib: E-cribs · Diagram: Keith Rose's Diagrams

- 1- 1c cross RH | cast off ; 1c ½ Fig8 up round 2c. 2c step up on [7-8] (2,1,3)
- 9- Reels3 on sides, 1c RSh to 4cnrs (2,1,3)
- 17- 1c ½ Fig8 R, LSh round 1cnrs ; repeat, LSh round 3cnrs to 2pl (2,1,3)
- 25- 2c+1c R&L (2,1,3)



Bob McMurtry, 1998, The Devil's Quandary

3C/4C longwise set.

Deviser's note: Advanced version

- 17- ½ Reels3 across, 1c LSh to 1cnrs ; ½ Reels3 across, 1c LSh to 3cnrs[pos] (2,1,3)

